



# Fixa Construction Chemicals

Corporate Presentation

**2026**  
CELEBRATING OUR 25<sup>th</sup> YEAR

# Milestones



**2001**  
**FOUNDED**  
to produce high quality innovative construction chemicals.

**2009**  
**ADANA FACTORY**  
was established.



**2012**  
**IGLOO EPS PRODUCTION FACILITIES**  
were established in a factory in Beylikdüzü.



Achievement Award Of  
Innovation Industry  
**2014**  
Product of the year  
for water  
impermeability

**2014**  
**SILICONE SEALANT**  
facilities were established in  
Avcilar factory.  
**REWARDED**  
with AQUAMER HB INVISIBLE as  
the Waterproofing Material  
of the Year.



ROOF AND FACADE  
MAGAZINE  
**2019**  
FACADE SYSTEM  
COMPONENT OF  
THE YEAR

**2019**  
**AGREGATE FACILITIES**  
were established in  
Avcilar factory.  
**REWARDED**  
with EPDM BOND as the year's  
facade systems component.



**2004**  
**AVCILAR FACTORY**  
was established with  
increased production capacity.



**2011**  
**ANKARA FACTORY**  
was established.



**2013**  
**REWARDED**  
with POLYMER MS as the  
Waterproofing Material of the Year.

**2018**  
**PUBLISHED**  
Aderans trusted  
reference in the industry.

**2022**  
**FIXA UK**  
was founded in London to develop  
products for the UK market.



We believe that we can live happily only in buildings constructed with high technology chemicals. We, as Fixa Construction Chemicals, have been producing high technology construction chemicals since 2001 for cozy homes and higher quality of life in buildings.



# Our Vision

We aim to be one of the leading brands in the world by producing advanced technology and innovative construction chemicals. We aim to contribute to the development of the construction sector with the knowledge and experience we have acquired.



## Sustainable Quality

We strive for sustainable and high quality production and to provide end-to-end quality orientated service to our customers.

The secret of our success is our quality-oriented approach in all our units including production, service, human resources, sales, after-sales support and production.

## Customer Satisfaction

Our R&D department continuously works to meet the demand of our customers.

We work to maximize customer satisfaction. We provide technical support to our customers and users in our after-sales services.

## Passion for Our Work

We owe the remarkable growth we achieved in 25 years to our passion for our work. Our employees have a sound contribution to our success.

All our work processes are configured to ensure that all our customers are serviced perfectly. We produce in line with our ISO 9001:2015 Quality Certificate and our products are certified by local and international institutions such as CE, TSE.



# Our Differences



## With 100% LOCAL PRODUCTION

we contribute to the economy.  
Our products are also acknowledged and used in global markets thanks to their high quality standards.



## THANKS TO OUR FLEXIBILITY AND SPEED

we can meet urgent customer demands, even forecast their needs and expectations before them.



## OUR PROFESSIONAL TECHNICAL TEAM

continues to give our customers after-sales support with technical trainings they need.

# Our Product Portfolio



We produce high quality construction chemicals in **11 main product categories**.  
We also produce gray and white EPS with our isolation brand IGLOO.



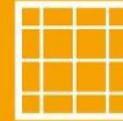
Waterproofing  
Systems



Floor  
Systems



Mold Release  
Agents and Curing  
Components



Tile  
Grouts



Sealants



Thermal  
Insulation  
Systems



Cement Based  
Plasters and  
Bonding Mortars



Technical  
Adhesives



Repair,  
Reinforcement and  
Restoration



Concrete  
and Mortar  
Admixtures



Tile and Ceramic  
Adhesives



EPS



# Waterproofing Systems



We produce high quality products in the following subcategories.

- MS Polymers
- Hybrid Polymers
- Capillary Waterproofing Systems
- Cement Based
- Cement + Acrylic Based
- Acrylic Based
- Silicone Based
- Bitumen Based
- Bitumen + Cement Based
- Bitumen + Polyurethane Based
- Polyurethane Based
- Polyurea Based
- Waterproofing Tapes and Subsidiary Products

FIXA is proud to be **the first producer of MS Polymer** based waterproofing products, sealants and adhesives in Türkiye since 2013, using the MS Polymer **technology** developed by **Kaneka in Japan**.



Achievement Award Of  
Isolation Industry  
**2013**  
Product of the year  
for water  
impermeability



Achievement Award Of  
Isolation Industry  
**2014**  
Product of the year  
for water  
impermeability

# Sealants



We produce high quality products in the following subcategories.

- MS Polymer Sealants
- Polyurethane Sealants
- Polyurethane + Tar Sealants
- Acrylic Sealants
- Silicone Sealants
- Polyurethane Foams

FIXA is proud to be the first producer of **MS Polymer technology in Türkiye**, a technology developed by **Kaneka in Japan**.



# Repair, Reinforcement and Restoration

**FIXA**<sup>®</sup>  
CONSTRUCTION CHEMICALS



We produce high quality products in the following subcategories.

- Cement Based Repair and Grout Mortars
- Hydraulic Lime Based Repair and Restoration Mortars
- Epoxy Based Repair, Renovation and Reinforcement Products
- Structural Reinforcement Products





We produce high quality products in the following subcategories.

- Cement Based Surface Hardeners
- Liquid Surface Hardeners
- Cement Based Screeds
- Gypsum Based Screeds
- PVC Coating Adhesives
- Epoxy Floor Primers
- Epoxy Floor Coatings
- Polyurethane Floor Coatings
- Other Floor Coatings
- Floor Systems - Other Products

Floor coatings and by-products such as floor paint, polyethylene joint sealant, polypropylene fibre and steel wire for concrete reinforcement are also produced in this group.



# Thermal Insulation Systems



We produce high quality products in the following subcategories.

- Primers
- Acrylic Based Adhesives
- Polyurethane Based Adhesives
- Cement Based Adhesives
- Cement Based Plasters



# Concrete and Mortar Admixtures

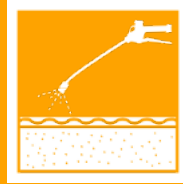
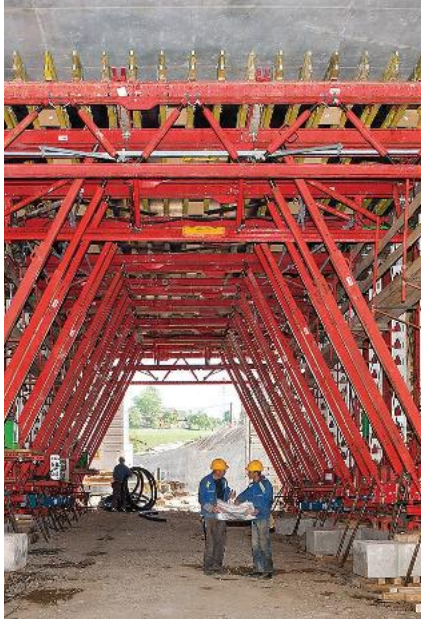


We produce the following products in concrete and mortar admixtures.

- Waterproofing Mortar and Screed Admixture
- Mortar and Screed Admixture with Waterproofing and Bonding Properties
- Concrete and Mortar Admixture for Anti-Frost



# Mold Release Agents and Curing Compounds

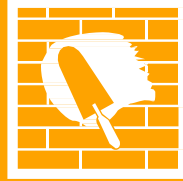


We produce high quality products in the following subcategories.

- Mold Release Agents
- Curing Compounds



# Cement Based Plasters and Bonding Mortars

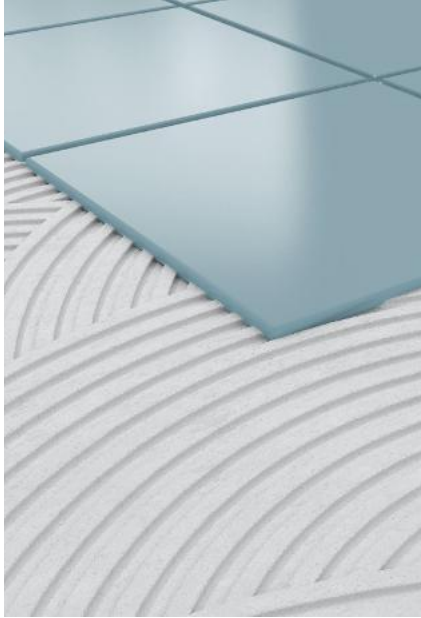


We produce high quality products in the following subcategories.

- Primers
- Cement Based Plasters
- Cement Based Bonding Mortars



# Tile and Ceramic Adhesives

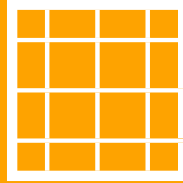


We produce high quality products in the following subcategories.

- Cement Based Adhesives
- Acrylic Based Adhesives
- Epoxy Based Adhesives
- Primers



# Tile Grouts



We produce high quality products in the following subcategories.

- Cement Based Tile Grouts
- Epoxy Based Tile Grouts
- Cleaning Products





We produce high quality products in the following subcategories.

- MS Polymer Based Adhesives
- Silicone Based Adhesives

FIXA is proud to be the first producer of **MS Polymer technology in Türkiye**, a technology developed by Kaneka in Japan.



# Our Business Model



All raw materials are supplied by our distinguished suppliers.



The quality checks of all raw materials are completed before they are accepted.



Orders from customers are taken to the production line and packaged automatically within the production planning procedures.



Products are delivered where ever needed thanks to our large distribution network and vehicles.



Product Responsibility Certificate by Mapfre can be disclosed to our customers upon request.



Our technical product managers support users on construction sites with trainings and demonstrations.

# Istanbul Factory



Outdoor Area : 11,000 m<sup>2</sup>  
Indoor Area : 6,000 m<sup>2</sup>

Production Capacity : 150,000 tonnes/year (powder product)  
5,000 tonnes/year (liquid product)  
5,000 tonnes/year (MS-silicone sealant)









Our factory which was established in 2011, located in Bakır ve Pirinç Industrial Zone in Beylikdüzü serves the Marmara and Central Anatolian regions.



Outdoor Area : 4,500 m<sup>2</sup>  
Indoor Area : 5,000 m<sup>2</sup>

Production Capacity : 350,000 m<sup>3</sup>/year (EPS)



There are different production lines for white EPS and gray EPS. The factory has a 1,500 m<sup>3</sup> puffing, block production and cutting and packaging capacity.



# Adana Factory



Our factory which is located in Hacı Sabancı Organized Industrial Zone services the Çukurova, East and South East Anatolian regions.

Outdoor Area : 4,000 m<sup>2</sup>

Indoor Area : 3,000 m<sup>2</sup>

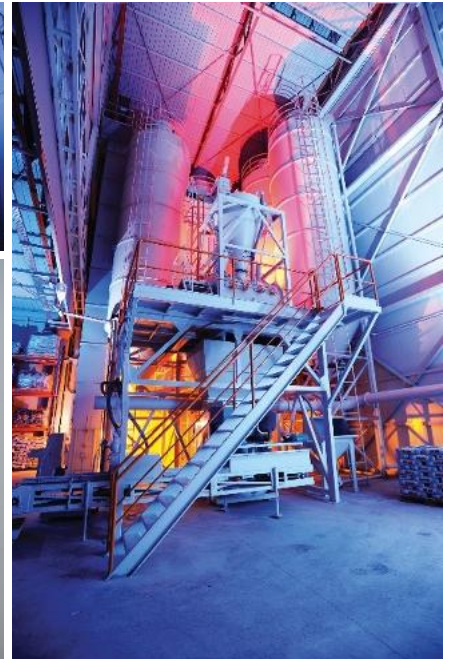
Production Capacity: 80,000 tonnes/year  
(powder product)



# Adana Factory



Our factory established in 2009 is the first construction chemicals factory in the region. It has a considerable potential for import due to its proximity to Mersin customs, as well as Iraq and Syria borders.



# Ankara Factory



Outdoor Area : 7,200 m<sup>2</sup>  
Indoor Area : 4,800 m<sup>2</sup>

Production Capacity : 120,000 tonnes/year (powder product)



# Ankara Factory



Our factory which was established in 2011, is located in Başkent Organized Industrial Zone is at 5 km distance to Ankara-Eskişehir highway and 1 km distance to Malköy Railway Station. It serves our customers in Central Anatolia, Black Sea, Aegean and Mediterranean regions.



FIXA Construction Chemicals UK was established in 2022.  
Our products are available for sale.





**25**  
YEARS

**4**  
FACTORIES

**220**  
+  
PRODUCTS

**30**  
+  
COUNTRIES  
TO EXPORT

**500**  
+  
POINT OF  
SALES in  
TÜRKİYE

**2.000**  
+  
REFERENCES

## HEADQUARTERS

Beylikdüzü OSB,  
Bakır ve Pirinç San. Sit.  
Mustafa Kurdođlu Cad. No:14  
Beylikdüzü - İstanbul  
T: +90 212 690 92 92 (pbx)  
F: +90 212 428 62 85

## İSTANBUL FACTORY

Firuzköy Mahallesi,  
Aziz Cad. No:16  
Avcılar - İstanbul  
T: +90 212 428 62 83 (pbx)  
F: +90 212 428 62 86

## ADANA FACTORY

Hacı Sabancı OSB,  
Süleyman Demirel Bulvarı No:30  
Sarıçam - Adana  
T: +90 322 394 42 42 (pbx)  
F: +90 322 394 42 65

## ANKARA FACTORY

Başkent OSB,  
19. Cadde No:74  
Malıköy, Temelli - Ankara  
T: +90 312 640 16 61 (pbx)  
F: +90 312 640 16 76

## THE UK OFFICE

17 Green Lanes, London,  
England, N16 9BS  
T: +44 (0) 2081760680  
M: +44 (0) 7308220398

[www.fixaco.uk](http://www.fixaco.uk)  
[info@fixaco.uk](mailto:info@fixaco.uk)



THANK YOU